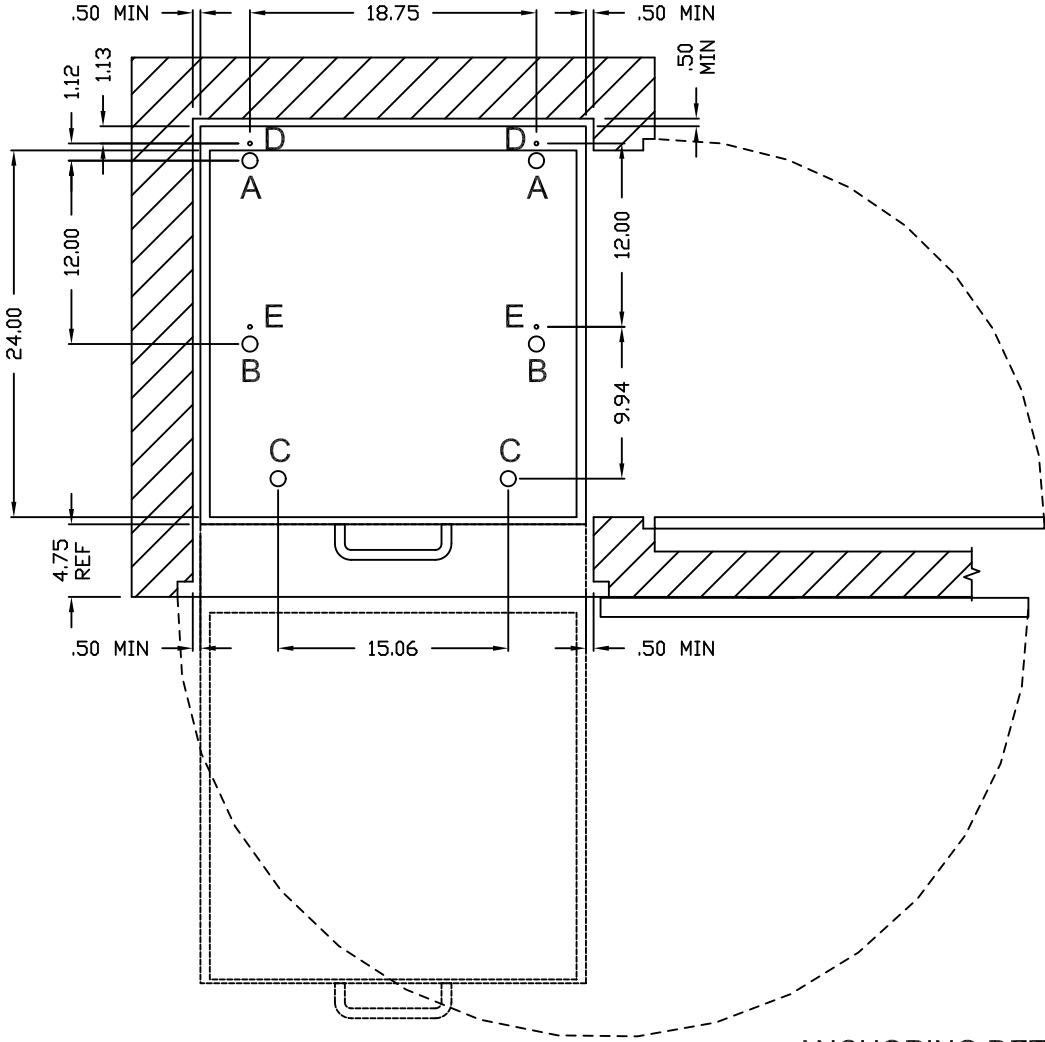


FORCES AT BOLT POINTS & FOOT POINTS

SYSTEM CONFIG	CARRIAGE WIDTH	CARRIAGE LENGTH	*WORST CASE* FORCE REQUIREMENTS				
			LEVELER 'A' SUPPORT	LEVELER 'B' SUPPORT	LEVELER 'C' SUPPORT	ANCHOR 'D' (PULL OUT)	ANCHOR 'E' (PULL OUT)
SINGLE ENTRY LEFT/RIGHT	24"	24"	400#	74#	900#	350#	650#
	24"	30"	400	74	900	350	650
	24"	36"	400	74	900	350	650

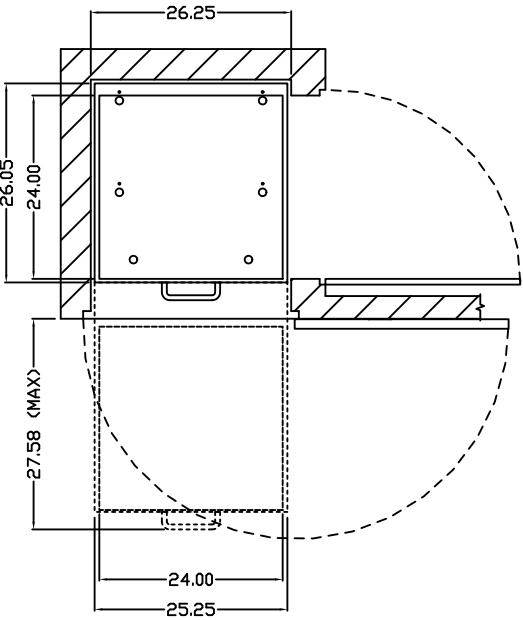
*FORCES CALCULATED PER BOLT
(SHELF WEIGHT = 15lb/ft LENGTH-WIDTH, UNIFORMLY DISTRIBUTED)
ANCHORS TO BE Ø 5/16"-18 GRADE 5 THREADED BOLTS
DO NOT USE WOOD AS A MOUNTING SUBSTRATE TO AVOID LONG TERM INDENTING



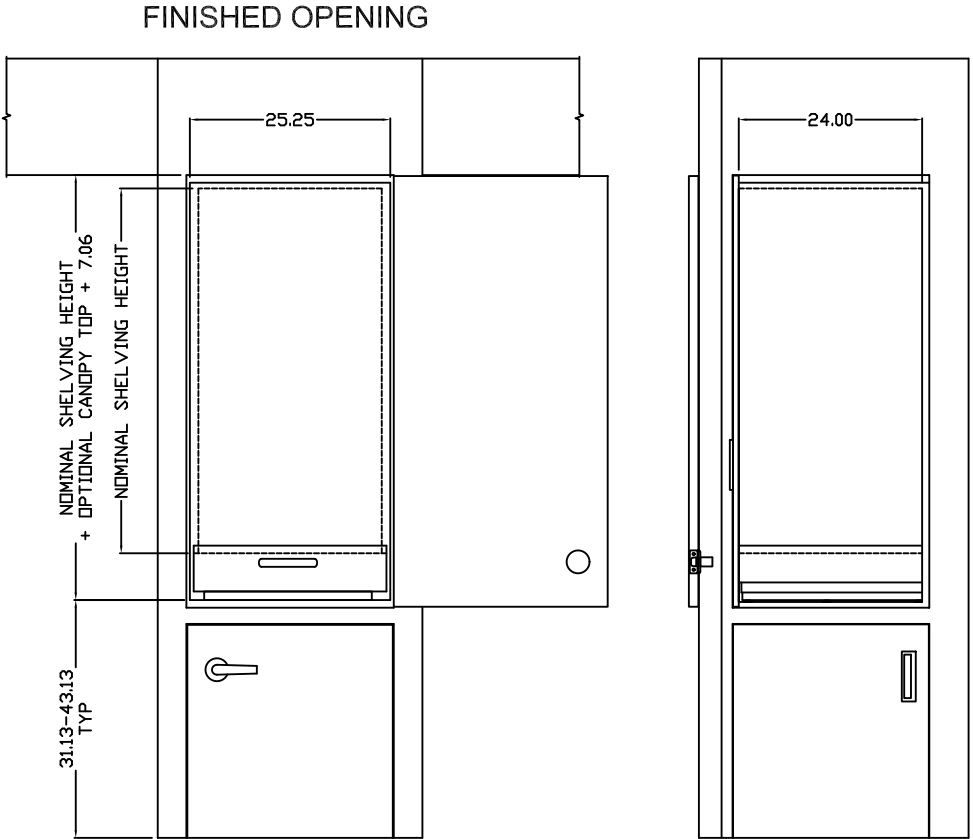
ANCHORING DETAIL
SCALE 2:1

ENCLOSURE CONSTRUCTION GUIDELINES

NOTES:
1.) CABINET/CLOSET AND MOUNTING SURFACE BY OTHERS.
2.) LOCAL FIRE CODES MAY APPLY. THE RESPONSIBILITY TO ENSURE APPLICABLE CODES HAVE BEEN MET IS THAT OF OTHERS.
3.) DOORS, WALLS, AND WALL THICKNESSES SHOWN ARE FOR ILLUSTRATIVE PURPOSES ONLY. ACTUAL DIMENSIONS TO BE FINALIZED BY OTHERS.
4.) DIMENSIONS SHOWN ARE TO PROVIDE FINISHED OPENING SIZES ONLY AND INCLUDE RECOMMENDED MINIMUM CLEARANCES.
(DIMENSIONS SUBJECT TO CHANGE WITHOUT NOTICE.)



SINGLE SIDED
SINGLE 24 X 24 CARRIAGE



COPYRIGHT © 1999 SPACESAVER CORPORATION. ALL RIGHTS RESERVED.
This material is proprietary and confidential, and the disclosure, reproduction (by photocopy, film, blueprint or otherwise) or incorporation into any information retrieval system without first receiving written approval from Spacesaver Corporation is expressly prohibited by law.

TOLERANCES UNLESS OTHERWISE SPECIFIED .XX±.01 .XXX±.005 X°±1°		SPACESAVER FORT ATKINSON WISCONSIN	
DWN BY SRI		DATE 1/26/09	
APVD		DATE	
SIZE D	FSCM NO. 58928	DWG NO. CoreSTOR S 24x24	REV A
SCALE NTS		SHEET OF	